



2017 Lift Gear Training Seminar - Summary & Information.

Course Length:

2 days – 26th & 27th April 2017

Price for Attendance.

\$595.00 per person.

How to Register

Complete the registration form below. – Registration deadline: 31 March 2017

Venue Information

Artec Machine Systems. 26 Commerce Drive, North Branford, CT. 06471. USA. Tel: (203) 484 2002

What's Included:

All course materials & handouts, Certificate of Attendance, spot prizes.

Continental breakfast, coffee breaks, 2 lunches plus 1 evening dinner event with 2 drink tickets on 26th.

What's not Included:

Travel and accommodations.

Recommended Accommodation:

Water's Edge Spa & Resort. 1525 Boston Post Road, Westbrook, CT. 06498

Phone: 1 800 222 5901

www.watersedgeresortandspa.com

A discounted rate of **\$129.00** p.p. per night has been negotiated for attendees. Make reservations directly with the Hotel and tell them that you are with the Artec Seminar.

What to bring:

Steel toe safety shoes must be worn during shop activities. Safety glasses will be provided.

Seminar Topics and Contents.

Day 1

Welcome and introduction.

Gear types & Gear lift Systems, Types of maintenance – Methods of diagnosis, Oil Sampling and analysis, audio and visual assessments.

Hands on Sessions – Details below

Day 2

Fundamentals of Gear tothing, terminology, troubleshooting and failure modes.

Backstops, bearings, bearing failures, couplings and equipment alignment.

Field service inspections and overhauls.

Hands on Sessions – Details below

Hands-on Demonstration Sessions

Class shall be Split into 5 Station Groups

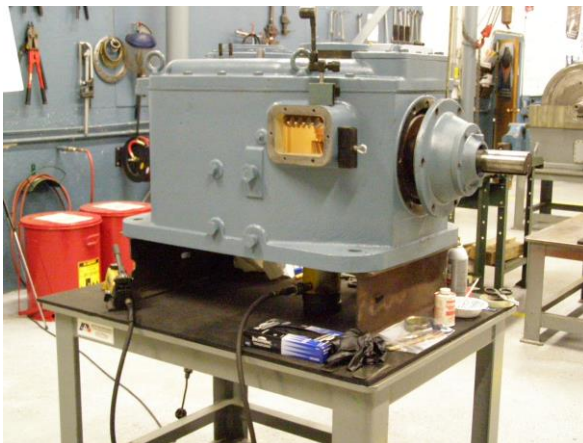
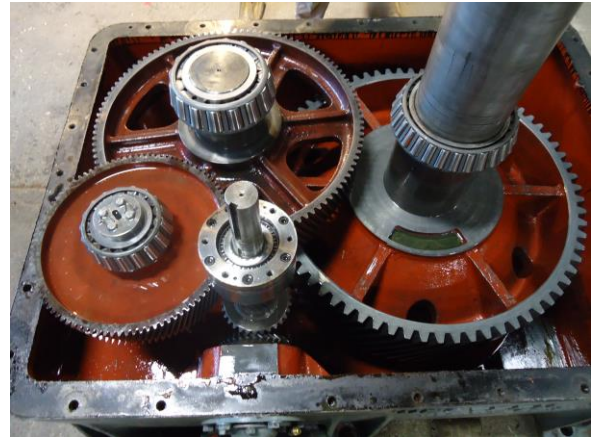
Station #1: Modular Component Disassembly/assembly of planetary lift gear (Kissling/Lohman)

Station #2: Disassembly/assembly of right angle bevel drive lift gearbox (Kissling)
Bearing removal and installtion.

Station #3: NDT (non destructive testing – (magnetic particle & dye penetrant)

Station #4: Alignment by dial indicator method and discuss laser alternative.
Tooth contact evaluation.

Station #5: Lift Worm gear drive.





2017 Lift Gear Training Seminar Registration Form

Company: _____

Name (Please Print): _____

Title: _____

E-mail: _____

Phone Number: _____

Fax: _____

Participants: _____

Participant Names: _____

Fax completed form to Artec Machine: 203 488 2969

Or

E-mail completed form to: gaetano.carmela@artec-machine.com

In order to secure your reservation at the 2017 Lift Gear Training Seminar hosted by Artec Machine Systems and Doppelmayr, I understand that my signature on this document promises payment in full to Artec Machine Systems no later than 31st March, 2017. The amount due to Artec Machine Systems by this date is \$_____ USD.

(Purchaser Signature)

(Date)